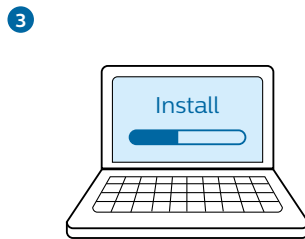
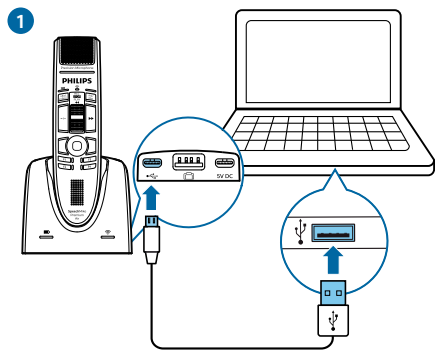




Customize your modes

- Modi anpassen
- Personalice sus modos
- Personalizzare le modalità
- Pas uw modi aan
- Personnalisez vos modes
- Personalizzare le modalità
- Anpassa lägen



© 2021 Speech Processing Solutions GmbH. All rights reserved.

Specifications are subject to change without notice. Philips and the Philips shield emblem are registered trademarks of Koninklijke Philips N.V. and are used under license.

Document version 3.0, 2021/05/07, 7740 103 2010.3

PHILIPS

SpeechMike

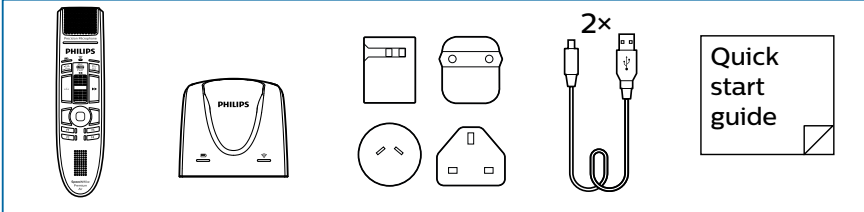
Premium Air

SMP4010

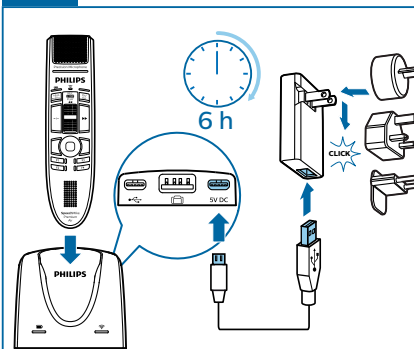


- EN** Quick start guide
- DE** Kurzanleitung
- FR** Guide de démarrage rapide
- ES** Guía de inicio rápido
- IT** Guida rapida di introduzione
- NL** Snelle startgids
- SV** Snabbstartsguide

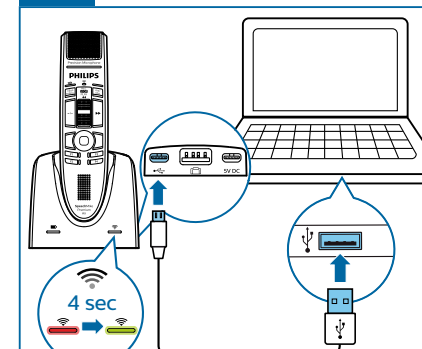
View the full manual online:
help.speechmike.com/smp4010



1



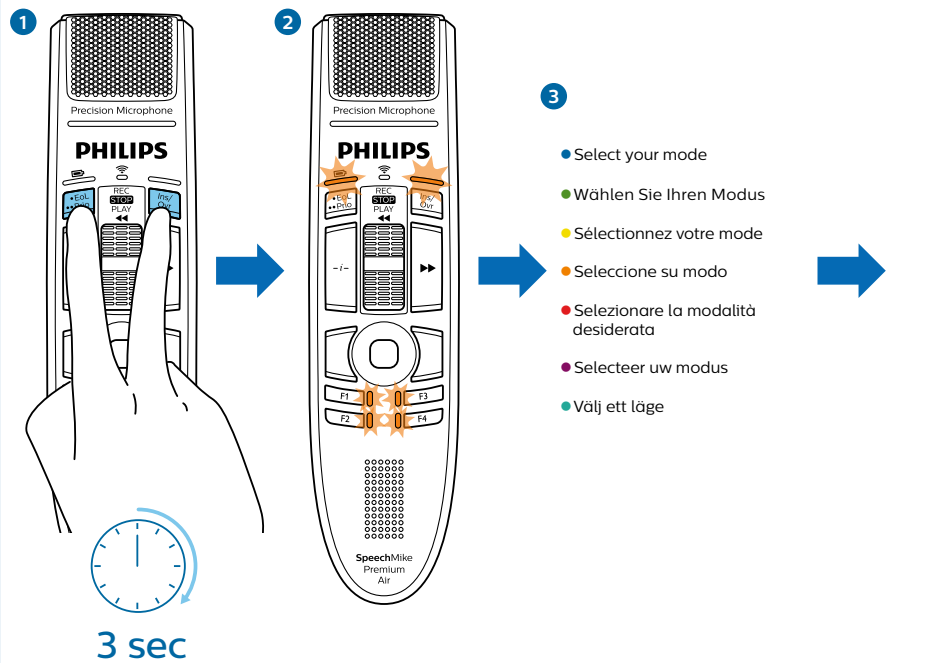
2





Select your button mode

- Tastenmodus auswählen
- Selección su modo de botones
- Selecteer uw toetsenmodus
- Sélectionnez votre mode des boutons
- Selezionare una modalità pulsante
- Välj ett knappläge



F1	<ul style="list-style-type: none"> ● Event mode (default) ● Mode de commande (standard) ● Modalità comando (standard) ● Åtgärdsläge (standard) 	<ul style="list-style-type: none"> ● Befehlsmodus (voreingestellt) ● Modo comando (estándar) ● Opdrachtmodus (standaard)
F2	<ul style="list-style-type: none"> ● Keyboard mode ● Mode clavier ● Modalità tastiera ● Tangentbordsläge 	<ul style="list-style-type: none"> ● Tastaturmodus ● Modo teclado ● Toetsenbordmodus
F3	<ul style="list-style-type: none"> ● Browser mode ● Modo navegador ● Webbläsarläge 	<ul style="list-style-type: none"> ● Browsermodus ● Modalità browser ● Browsermodus
F4	<ul style="list-style-type: none"> ● Windows speech recognition mode ● Windows Spracherkennungsmodus ● Mode de reconnaissance vocale Windows ● Modo reconocimiento de voz Windows ● Modalità riconoscimento vocale Windows ● Windows-spraakherkenningsmodus ● Läget Windows taligenkänning 	
•EoL	<ul style="list-style-type: none"> ● Dragon for Mac mode ● Mode Dragon pour Mac ● Modalità Dragon per Mac ● Läget Dragon för Mac 	<ul style="list-style-type: none"> ● Dragon-Modus für Mac ● Modo Dragon para Mac ● Dragon-modus voor Mac
••Prio		
Ins/Ovr	<ul style="list-style-type: none"> ● Dragon for Windows mode ● Dragon-Modus für Windows ● Mode Dragon pour Windows ● Modo Dragon para Windows ● Modalità Dragon per Windows ● Dragon-modus voor Windows ● Läget Dragon för Windows 	

i Find more information on all button modes here: www.speechmike.com/premium-air/support

Weitere Informationen zu allen Tastenmodi finden Sie hier: www.speechmike.com/premium-air/support

De plus amples informations sur les modes des boutons sont disponibles ici : www.speechmike.com/premium-air/support

Encuentre más información acerca de todos los modos de botones aquí: www.speechmike.com/premium-air/support

Ulteriori informazioni su tutte le modalità pulsante sono disponibili qui: www.speechmike.com/premium-air/support

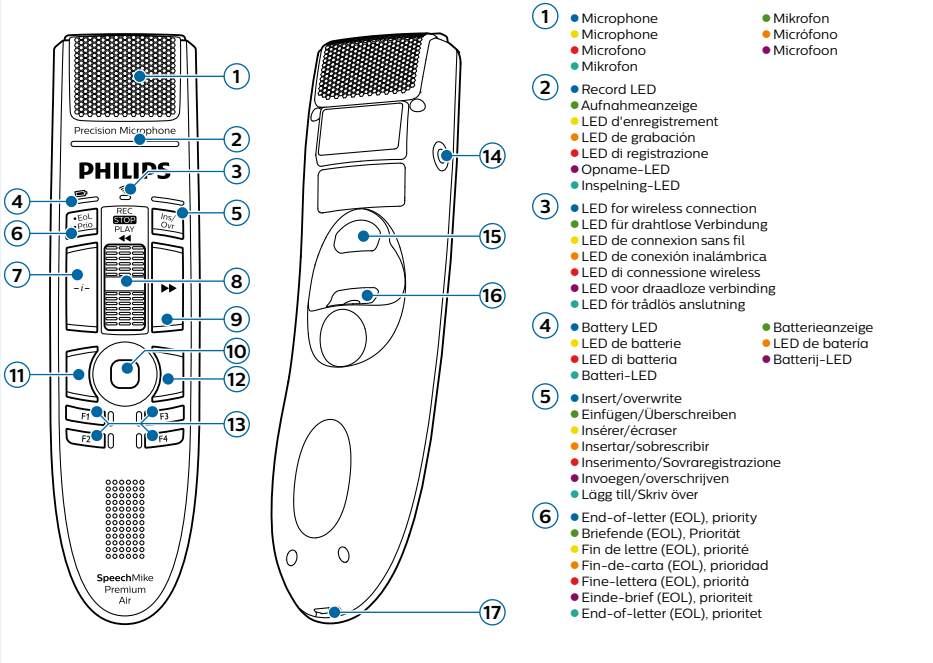
Hier vindt u meer informatie over alle toetsenmodi: www.speechmike.com/premium-air/support

För mer information om alla knapplägen: www.speechmike.com/premium-air/support



Overview (Event mode)

- Übersicht (Befehlsmodus)
- Descripción general (Modo comando)
- Overzicht (Opdrachtmodus)
- Présentation (Mode de commande)
- Panoramica (Modalità comando)
- Översikt (Åtgärdsläge)



- | | | |
|-----------|---|---|
| 1 | <ul style="list-style-type: none"> ● Microphone ● Aufnahmeanzeige ● LED d'enregistrement ● LED de grabación ● LED di registrazione ● Opname-LED ● Inspelning-LED | <ul style="list-style-type: none"> ● Mikrofon ● Microfono ● Mikrofoon |
| 2 | <ul style="list-style-type: none"> ● Record LED ● LED für drahtlose Verbindung ● LED de connexion sans fil ● LED de conexión inalámbrica ● LED di connessione wireless ● LED voor draadloze verbinding ● LED för trådlös anslutning | |
| 3 | <ul style="list-style-type: none"> ● Battery LED ● LED de batterie ● LED di batteria ● Batteri-LED | <ul style="list-style-type: none"> ● Batterieanzeige ● LED de batería ● Batterij-LED |
| 4 | <ul style="list-style-type: none"> ● Insert/overwrite ● Einfügen/Überschreiben ● Insérer/écraser ● Insertar/sobrescribir ● Inserimento/Sovraregistrazione ● Invoegen/overschrijven ● Lägg till/Skriv över | |
| 5 | <ul style="list-style-type: none"> ● End-of-letter (EOL), priority ● Briefende (EOL), Priorität ● Fin de lettre (EOL), priorité ● Fin-de-carta (EOL), prioridad ● Fine-lettera (EOL), priorità ● Einde-brief (EOL), prioriteit ● End-of-letter (EOL), prioriteit | |
| 6 | <ul style="list-style-type: none"> ● Instruction ● Anweisung ● Instrucción ● Istruzioni ● Instructie ● Instruktion | |
| 7 | <ul style="list-style-type: none"> ● Slide switch (record, stop, play, rewind) ● Schiebeschalter (Aufnahme, Stopp, Wiedergabe, Rücklauf) ● Interrupteur à curseur (enregistrement, arrêt, lecture, retour) ● Interruptor deslizante (grabar, detener, reproducir, rebobinado) ● Selettore (registrazione, stop, riproduzione, riavvolgimento) ● Schuifschakelaar (opname, stop, afspelen, terug) ● Skjutreglage (spela in, stopp, spela upp, spola tillbaka) | |
| 8 | <ul style="list-style-type: none"> ● Fast-forward ● Schneller Vorlauf ● Avance rapide ● Avance rápido ● Avanti veloce ● Snel vooruit ● Snabbspola framåt | |
| 9 | <ul style="list-style-type: none"> ● Touch navigation/left mouse button ● Touch-Navigation/linke Maustaste ● Navigation tactile/bouton gauche de souris ● Navegación táctil/botón izquierdo del ratón ● Navigazione touch/pulsante sinistro del mouse ● Touchnavigatie/linker muisknop ● Touch-navigering/vänster musknapp | |
| 10 | <ul style="list-style-type: none"> ● Left mouse button ● Linke Maustaste ● Bouton gauche de souris ● Botón izquierdo del ratón ● Pulsante sinistro del mouse ● Linker muisknop ● Vänster musknapp | |
| 11 | <ul style="list-style-type: none"> ● Right mouse button ● Rechte Maustaste ● Bouton droit de souris ● Botón derecho del ratón ● Pulsante destro del mouse ● Rechter muisknop ● Höger musknapp | |
| 12 | <ul style="list-style-type: none"> ● Programmable function keys ● Programmierbare Funktionstasten ● Touches de fonction programmables ● Botones con función programable ● Pulsanti funzione programmabili ● Programmeerbare functietoetsen ● Programmerbara funktionsknappar | |
| 13 | <ul style="list-style-type: none"> ● On/Off ● Marche/Arrêt ● Accensione/spegnimento ● På/Av | <ul style="list-style-type: none"> ● Ein/Aus ● Encender/Apagar ● Aan/Uit |
| 14 | <ul style="list-style-type: none"> ● Command button ● Befehlstaste ● Bouton de commande ● Botón de comando ● Pulsante di comando ● Commandknop ● Commandoknapp | |
| 15 | <ul style="list-style-type: none"> ● Left mouse button ● Linke Maustaste ● Bouton gauche de souris ● Botón izquierdo del ratón ● Pulsante izquierdo del mouse ● Linker muisknop ● Vänster musknapp | |
| 16 | <ul style="list-style-type: none"> ● Right mouse button ● Rechte Maustaste ● Bouton droit de souris ● Botón derecho del ratón ● Pulsante derecho del mouse ● Rechter muisknop ● Höger musknapp | |
| 17 | <ul style="list-style-type: none"> ● USB connection ● Port USB ● Connessione USB ● USB-anslutning | <ul style="list-style-type: none"> ● USB-Anschluss ● Conexión USB ● USB-aansluiting |